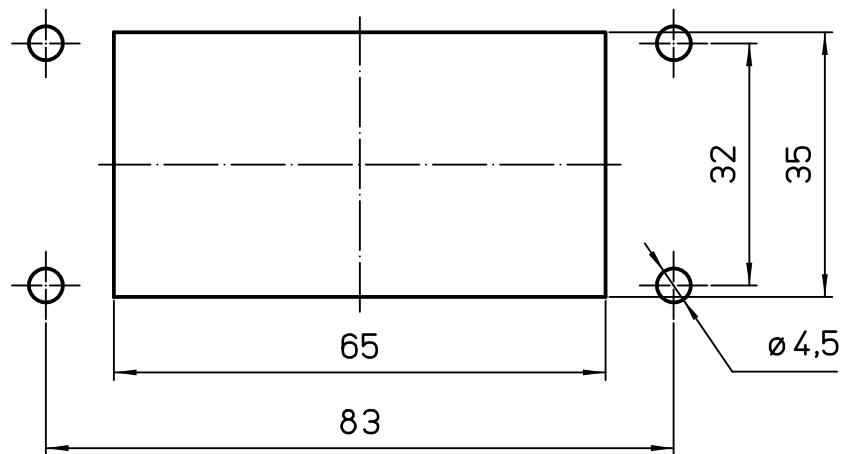


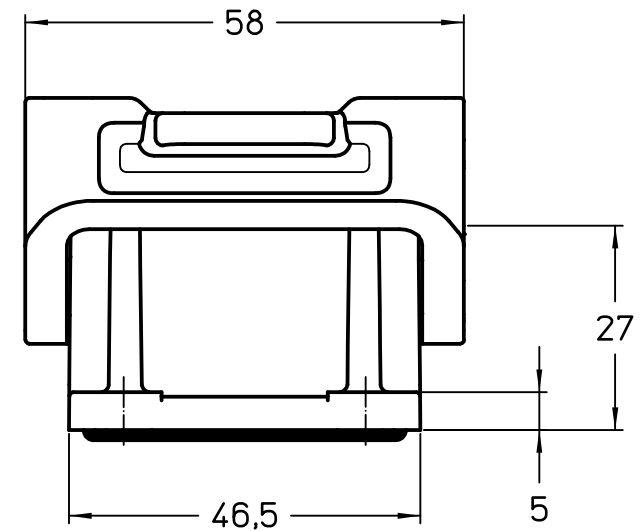
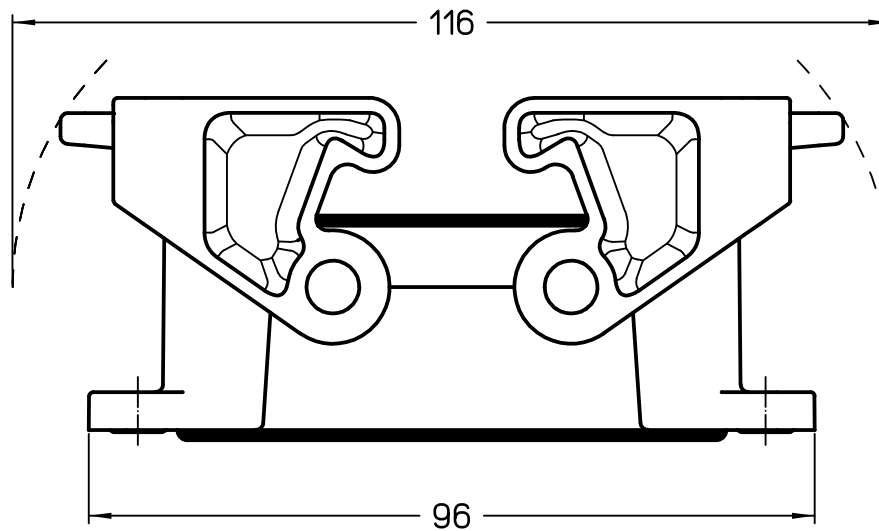
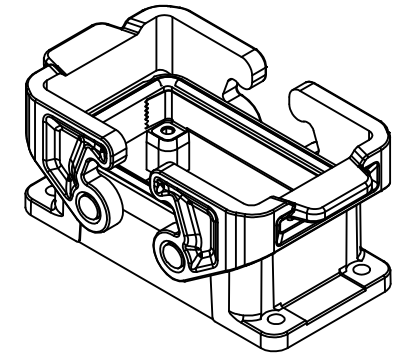
1

2

3



Panel cut-out



	Dimensions in mm
Original Size A4	
Date 04/02/22	
Sign. G. Renna	

Simplified representation with dimensions without tolerance

THIH 10 B
Insulating bulkhead mounting housing size "57.27"
with integrated PE jumpers - HYGIENIC

Scale
1:1



1

2

3